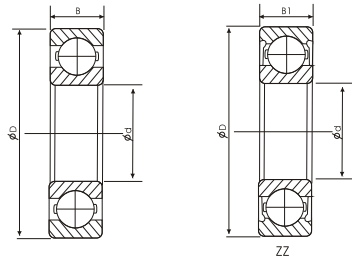
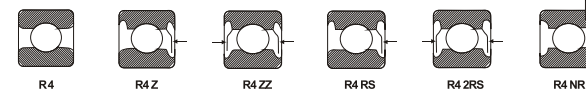
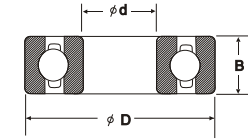


MINIATURE BALL BEARINGS



d	Principal dimensions(mm)				r _{min}	Weight (g)	Bearing Number		Basic Load Rating kN		Limiting Speed (rpm)	
	D	B	B1	Open			W/Shields	Dynamic Cr	Static Cor	Grease	Oil	
3	6	2.0	2.5	0.08	0.20	673	ZZ	242	94	60000	71000	
	7	2.0	3.0	0.10	0.33	683	ZZ	390	130	58000	68000	
	8	3.0	4.0	0.15	0.61	693	ZZ	560	180	54000	63000	
	9	3.0	5.0	0.15	0.92	603	ZZ	635	219	50000	59000	
4	10	4.0	4.0	0.15	1.60	623	ZZ	640	224	50000	58000	
	7	2.0	2.5	0.08	0.28	674	ZZ	269	117	54000	63000	
	9	2.5	4.0	0.10	0.67	684	ZZ	640	224	49000	57000	
	11	4.0	4.0	0.15	1.80	694	ZZ	715	276	45000	52000	
5	12	4.0	4.0	0.20	2.10	604	ZZ	970	360	43000	51000	
	13	5.0	5.0	0.20	3.20	624	ZZ	1310	490	42000	49000	
	16	5.0	5.0	0.30	5.10	634	ZZ	1760	680	37000	44000	
	8	2.0	2.5	0.08	0.32	675	ZZ	292	142	49000	57000	
	11	3.0	5.0	0.15	1.10	685	ZZ	715	282	43000	51000	
	13	4.0	4.0	0.20	2.40	695	ZZ	1080	430	40000	47000	
	14	5.0	5.0	0.20	3.50	605	ZZ	1330	505	39000	46000	
	16	5.0	5.0	0.30	4.80	625	ZZ	1760	680	37000	44000	
	19	6.0	6.0	0.30	8.00	635	ZZ	2340	885	34000	40000	
	10	2.5	3.0	0.10	0.65	676	ZZ	530	240	43000	51000	
6	13	3.5	5.0	0.15	1.90	686	ZZ	1080	440	39000	46000	
	15	5.0	5.0	0.20	3.80	696	ZZ	1350	530	37000	44000	
	17	6.0	6.0	0.30	6.00	606	ZZ	2190	865	35000	42000	
	19	6.0	6.0	0.30	8.10	626	ZZ	2340	885	34000	40000	
	11	2.5	3.0	0.10	0.67	677	ZZ	555	269	40000	47000	
	14	3.5	5.0	0.15	2.10	687	ZZ	1170	510	37000	44000	
	17	5.0	5.0	0.30	5.20	697	ZZ	1610	715	35000	41000	
	19	6.0	6.0	0.30	8.00	607	ZZ	2240	910	34000	40000	
	22	7.0	7.0	0.30	13.00	627	ZZ	3350	1400	32000	37000	
	12	2.5	3.5	0.10	0.75	678	ZZ	575	298	38000	45000	
8	16	4.0	5.0	0.20	3.10	688	ZZ	1260	585	35000	41000	
	19	6.0	6.0	0.30	7.30	698	ZZ	1990	865	33000	39000	
	22	7.0	7.0	0.30	12.00	608	ZZ	3350	1400	32000	37000	
	24	8.0	8.0	0.30	17.00	628	ZZ	4000	1590	31000	36000	
	14	3.0	4.5	0.10	1.40	679	ZZ	920	465	36000	42000	
	17	4.0	5.0	0.20	3.20	689	ZZ	1720	820	33000	39000	
9	20	6.0	6.0	0.30	8.20	699	ZZ	2480	1090	32000	38000	
	24	7.0	7.0	0.30	14.00	609	ZZ	3400	1450	31000	36000	
	26	8.0	8.0	0.30	20.00	629	ZZ	4550	1960	30000	35000	

MINIATURE BALL BEARINGS (Inch Series)



PART NUMBER	BORE		OUTER DIAMETER			WIDTH		r _{max}	BALLS		STATIC LOAD (N)	DYNAMIC LOAD (N)	
	FRAC.	INCH	TOL.	FRAC.	INCH	TOL.	TOL.		NO.	FRAC.			
				OPEN		SEAL/SHIELD							
R2	1/8	3.1750	-0.003	3/8	9.5250	-0.004	.1562	.1562	.012	7	1/16	49	113
R3	3/16	4.7625	-0.003	1/2	12.7000	-0.004	.1562	.1960	.012	7	3/32	70	145
R4	1/4	6.3500	-0.003	5/8	15.8750	-0.004	.1960	.1960	.012	7	1/8	195	385
R4A	1/4	6.3525	-0.003	3/4	19.0500	-0.004	.2188	.2812	.016	6	9/54	150	320
R6	3/8	9.5250	-0.003	7/8	22.2250	-0.004	.2188	.2812	.016	7	5/32	305	570
R8	1/2	12.7000	-0.003	1-1/8	28.5750	-0.004	.2500	.3125	.016	8	3/16	500	885
R10	5/8	15.8750	-0.003	1-3/8	34.9250	-0.005	.2812	.3438	.031	9	3/16	565	970
R12	3/4	19.0500	-0.004	1-5/8	41.2750	-0.005	.3125	.4375	.031	10	7/32	850	1265
R14	7/8	22.2250	-0.004	1-7/8	47.6250	-0.005	.3750	.5000	.031	10	1/4	1110	1735
R16	1	25.4000	-0.004	2	50.8000	-0.005	.3750	.5000	.031	10	1/4	1110	1735
R18	1 1/8	28.5750	-0.004	2-1/8	53.9750	-0.005	.3750	.5000	.031	11	1/4	1225	1840
R20	1 1/4	31.7500	-0.005	2	57.1500	-0.005	.3750	.5000	.031	12	1/4	1335	1920