

## SPLIT PILLOW BLOCKS/PLUMMER BLOCKS

Some sizes of housings listed below may not be available.

SN5 00-6 00 Ser ies  
SN2 00-3 00 Ser ies  
Light duty



SD500-600 Series  
SD3000 Series



SN5 00-6 00 Ser ies  
SN2 00-3 00 Ser ies  
Medium duty



SAF500-600 Series



Sn3 000 Series  
Sn3 100 Ser ies



SAF200-300 Series



SNK 500-600 Series



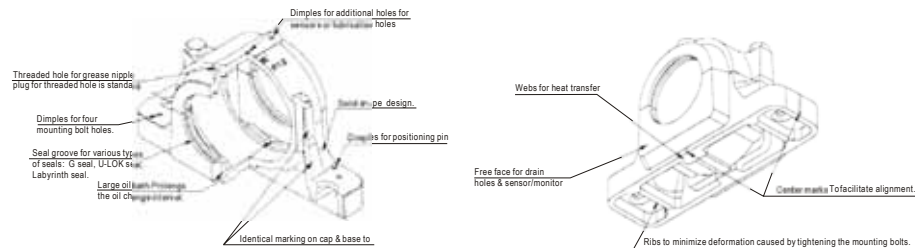
SDAF 500-600 Series  
SDAF200-300 Series  
SDAF-2300-K Series



SD3 100 Ser ies



SAF-230K Series



## SPLIT PILLOW BLOCKS / PLUMMER BLOCKS

Split pillow blocks mention ed in this catalogue are casted and produced in accordance with the ISO/R1 13-1994 stand ard. (B.S. 1642; 1969 standard, JIS B 1551- 1968 standar d). The following tables show the standardiz ation of materials and relative machi ning tolerance covering the housings and its accessories.

### A: Housing

MATERIAL	ISO CODE	U.S. CODE	TENSILE STRENGTH kgf/mm <sup>2</sup>	YIELD STRENGTH kgf/mm <sup>2</sup>	ELONGATION
CAST IRON	GRADE 200 (FC 200)	ASTM A48 GRADE 35	20	—	—
DUCTILE IRON (S.G.)	GRADE 450-10 (FCD 450)	ASTM A536 GRADE 65-45-12	45	30	10%
CAST STEEL	GRADE 230-450 (SC 460)	ASTM A27 GRADE 65-35	46	23	19%

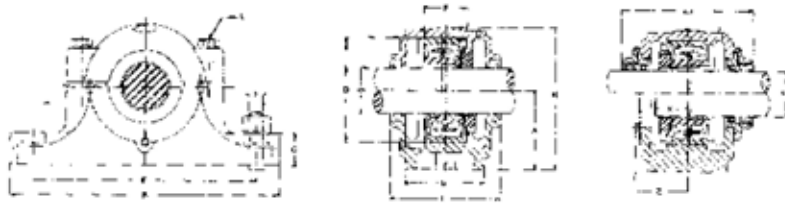
### B. Accessories :

NAME	PART NO.	MATERIALS
FELT STRIP	FS	60%-80% WOOL, 20% RAYON, DENSITY 0.25g/cm <sup>2</sup>
LOCATING RING	SR	MILD STEEL STRIP AISI 1010/ALUMINUM
HEXAGON BOLT	M	MILD STEEL AISI 1010
ZF SEAL	ZF	NBR (Nitrile -Butadiene Rubber)
SC SEAL	OSM	NBR (Nitrile -Butadiene Rubber)
U-TYPE SEAL	U-500/U-600	NBR (Nitrile -Butadiene Rubber)
LABYRINTH SEAL	TS/LER	CAST IRON/ALUMINUM/STEEL
TACONITE CARRIER	TAC/TER/TACK	CAST IRON
END COVER	500NA/600NA	NBR (Nitrile -Butadiene Rubber)& THIN STEEL PLATE
END PLATE	P	THIN STEEL PLATE
END COVER	TSA	CAST IRON
END PLUG	EPR	NBR (Nitrile -Butadiene Rubber)& THIN STEEL PLATE
V-RING SEAL	TSNA-A	NBR (Nitrile -Butadiene Rubber)& THIN STEEL PLATE

Declaration: Weights listed in this catalog are subject to change without notice.

## BEARING HOUSING & ACCESSORIES

### SN - SSN 500 Series



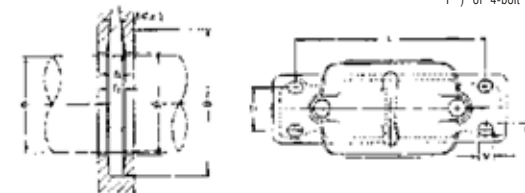
HOUSING NO.	NORMAL DIMENSIONS (mm)															
	SHAFT DIA.D1		D H8	B	b	G	F H13	A h13	L	H	E	E1	L1	X	Z	D2H12 mm
	mm	in														
SN 505	20	3/4	52	165	46	22	25	40	67	75	130	25	-	22	-	21.5
SN 506	25	1	62	185	52	22	30	50	77	90	150	25		22		26.5
SN 507	30	11/8	72	185	52	22	33	50	82	95	150	25	-	24	-	31.5
SN 508	35	11/4	80	205	60	25	33	60	85	110	170	30		26		36.5
SN SSN 509	40	11/2	85	205	60	25	31	60	85	112	170	30		28		41.5
SN SSN 510	45	13/4	90	205	60	25	33	60	90	115	170	30		28		46.5
SN SSN 511	50	2	100	255	70	28	33	70	95	130	210	35	160	30	54	51.5
SN SSN 512	55	21/8	110	255	70	30	38	70	105	135	210	35	172	32	62	56.5
SN SSN 513	60	21/4	120	275	80	30	43	80	110	150	230	40	172	36	62	62
SN SSN 515	65	21/2	130	280	80	30	41	80	115	155	230	40	182	38	68	67
SN SSN 516	70	23/4	140	315	90	32	43	95	120	175	260	50	184	40	68	72
SN SSN 517	75	3	150	320	90	32	46	95	125	185	260	50	184	42	70	77
SN SSN 518	80	31/4	160	345	100	35	62.4	100	145	195	290	50	204	50	81	82
SN SSN 519	85	-	170	345	100	35	53	112	140	210	290	50	-	-	-	87
SN SSN 520	90	31/2	180	380	110	40	70.3	112	160	218	320	60	224	54	90	92
SN SSN 522	100	4	200	410	120	45	80	125	175	240	350	70	232	60	92	102
SN SSN 524	110	41/4	215	410	120	45	86	140	185	270	350	70	248	64	95	113
SN SSN 526	115	41/2	230	445	130	50	90	150	190	290	380	70	268	64	100	118
SN SSN 528	125	5	250	500	150	50	98	150	205	305	420	80	286	70	108	128
SN SSN 530	135	51/4	270	530	160	60	106	160	220	325	450	90	304	76	113	138
SN SSN 532	140	51/2	290	550	160	60	114	170	235	345	470	90	320	80	122	143

## BEARING HOUSING & ACCESSORIES

### SN - SSN 500 Series

#### NOTES:

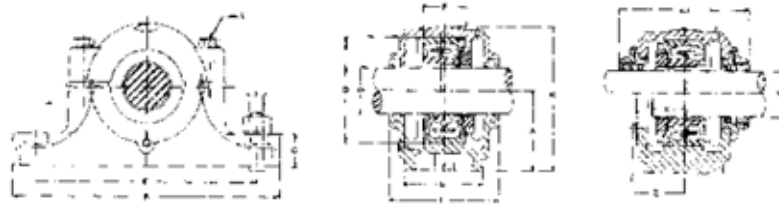
Foot of standard housing SSN type is solid without mounting holes or can be precast as 2-bolt (with prefix T ) or 4-bolt mounting holes (with prefix F).



d3 H12	t	f1 H13	f2	u	v	S		WEIGHT kg		BEARING NO.		ADAPTER SLEEVES		LOCATING RING	
						2 bolts	4 bolts	SN5	SSN5	SELF-ALIGN BALL	SPHERICAL ROLLER	METRIC	INCH	NUMBER	QTY
31	M8	3	4.2	15	20	M12	M8	1.5	2.3	<b>1205K</b> <b>2205K</b>	<b>22205K</b>	H205 H305	HE205 HE305	52x5 52x7	2 1
38	M8	4	5.4	15	20	M12	M10	1.74	2.8	<b>1206K</b> <b>2206K</b>	<b>22206K</b>	H206 H306	HE206 HE306	62x7 62x10	2 1
43	M10	4	5.4	15	20	M12	M10	1.9	3.2	<b>1207K</b> <b>2207K</b>	<b>22207K</b>	H207 H307	HE207 HE307	72x8 72x10	2 1
48	M10	4	5.4	15	20	M12	M10	2.63	3.2	<b>1208K</b> <b>2208K</b>	<b>22208K</b>	H208 H308	HE208 HE308	80x7.5 80x10	2 1
53	M10	4	5.4	15	20	M12	M10	2.64	3.7	<b>1209K</b> <b>2209K</b>	<b>22209K</b>	H209 H309	HE209 HE309	85x6 85x8	2 1
58	M10	4	5.4	15	20	M12	M10	2.8	3.8	<b>1210K</b> <b>2210K</b>	<b>22210K</b>	H210 H310	HE210 HE310	90x6.5 90x10	2 1
67	M12	5	6.9	18	23	M16	M12	4.32	6.2	<b>1211K</b> <b>2211K</b>	<b>22211K</b>	H211 H311	HE211 HE311	100x6 100x8	2 1
72	M12	5	6.9	18	23	M16	M12	4.99	6.5	<b>1212K</b> <b>2212K</b>	<b>22212K</b>	H212 H312	HE212 HE312	110x8 110x10	2 1
77	M12	5	6.8	18	23	M16	M12	5.64	8.3	<b>1213K</b> <b>2213K</b>	<b>22213K</b>	H213 H313	HE213 HE313	120x10 120x12	2 1
82	M12	5	6.8	18	23	M16	M12	6.19	9.0	<b>1215K</b> <b>2215K</b>	<b>22215K</b>	H215 H315	HE215 HE315	130x8 130x10	2 1
89	M16	6	8.1	22	27	M20	M12	8.17	12.1	<b>1216K</b> <b>2216K</b>	<b>22216K</b>	H216 H316	HE216 HE316	140x8.5 140x10	2 1
94	M16	6	8.1	22	27	M20	M12	9.37	12.2	<b>1217K</b> <b>2217K</b>	<b>22217K</b>	H217 H317	HE217 HE317	150x9 150x10	2 1
99	M16	6	8.1	22	27	M20	M16	11.5	15.2	<b>1218K</b> <b>2218K</b>	<b>22218K</b>	H218 H318	HE218 HE318	160x16.2 160x11.2	2 2
104	M16	6	8.1	22	28	M20	M16	13.5	17.7	<b>1219K</b> <b>2219K</b>	<b>22219K</b>	H219 H319	HE219 HE319	170x10.5 170x10	2 1
111	M20	7	9.3	26	32	M24	M16	16.3	20.5	<b>2220K</b> <b>23220K</b>	<b>22220K</b>	H320 H2320	HE320 HE2320	180x12.1 180x10	2 1
125	M20	8	10.8	26	32	M24	M16	25.1	29.2	<b>2222K</b> <b>23222K</b>	<b>22222K</b>	H322 H2322	HE322 HE2322	200x13.5 200x10	2 1
135	M20	8	10.7	26	34	M24	M16	27.2	33	<b>2224K</b> <b>23224K</b>	<b>22224K</b>	H3124 H2324	HE3124 HE2324	215x14 215x10	2 1
140	M24	8	10.7	28	35	M24	M20	35.2	40.9	<b>2226K</b> <b>23226K</b>	<b>22226K</b>	H3126 H2326	HE3126 HE2326	230x13 230x10	2 1
154	M24	9	12.2	34	44	M30	M24	43.7	48.6	<b>2228K</b> <b>23228K</b>	<b>22228K</b>	H3128 H2328	HE3128 HE2328	250x15 250x10	2 1
164	M24	9	12.2	34	42	M30	M24	45.3	56.2	<b>2230K</b> <b>23230K</b>	<b>22230K</b>	H3130 H2330	HE3130 HE2330	270x16.5 270x10	2 1
173	M24	10	13.7	32	44	M30	M24	50.75	68.5	<b>2232K</b> <b>23232K</b>	<b>22232K</b>	H3132 H2332	HE3132 HE2332	290x17 290x10	2 1

## BEARING HOUSING & ACCESSORIES

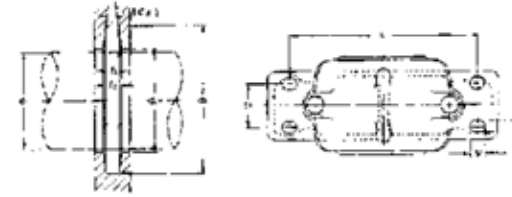
### SN -SSN 600 Series



HOUSING NO.		NORMAL DIMENSIONS (mm)															
		SHAFT DIA.D1		D H8	B	b	G	F H13	A h13	L	H	E	E1	L1	X	d2H12 METRIC	d3 H12
		mm	in														
SN	605	20	3/4	62	185	52	22	34	50	80	90	150	25	-	27	21.5	31
SN	606	25	1	72	185	52	22	37	50	82	95	150	25	-	27	26.5	38
SN	607	30	11/8	80	205	60	25	41	60	90	110	170	30	-	32	31.5	43
SN	608	35	11/4	90	205	60	25	43	60	95	115	170	30	-	34	36.5	48
SN SSN	609	40	11/2	100	255	70	28	46	70	105	130	210	35	-	36	41.5	53
SN SSN	610	45	13/4	110	255	70	30	50	70	115	135	210	35	-	39	46.5	58
SN SSN	611	50	2	120	275	80	30	53	80	120	150	230	40	185	40	51.5	67
SN SSN	612	55	21/8	130	280	80	30	56	80	125	155	230	40	185	44	56.5	72
SN SSN	613	60	21/4	140	315	90	32	58	95	130	175	260	50	200	46	62	77
SN SSN	615	65	21/2	160	345	100	35	65	100	140	195	290	50	210	51	67	82
SN SSN	616	70	23/4	170	345	100	35	68	112	145	212	290	50	210	52	72	89
SN SSN	617	75	3	180	380	110	40	70	112	155	218	320	60	220	56	77	94
SN SSN	618	80	31/4	190	400	110	33	74	112	160	230	335	60	225	58	82	99
SN SSN	619	85		200	420	120	36	77	125	170	245	350	70	235	60	87	104
SN SSN	620	90	31/2	215	420	120	38	83	140	175	280	350	70	240	64	92	111
SN SSN	622	100	4	240	460	130	40	90	150	190	300	390	70	258	69	102	125
SN SSN	624	110	41/4	260	540	160	50	96	160	205	325	450	90	280	73	113	135
SN SSN	626	115	41/2	280	560	160	50	103	170	215	350	470	90	300	77	118	140
SN SSN	628	125	5	300	630	170	55	112	180	235	375	520	90	320	83	128	154
SN SSN	630	135	51/4	320	680	180	55	118	190	245	395	560	90	340	88	138	164
SN SSN	632	140	51/2	340	710	190	60	124	200	255	415	580	100	350	93	143	173

## BEARING HOUSING & ACCESSORIES

### SN -SSN 600 Series



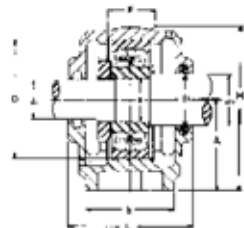
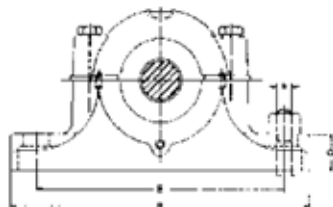
#### NOTES:

Foot of standard housing SSN type is solid without mounting holes. It can be precast as 2-bolt (with prefix T) or 4-bolt mounting holes (with prefix F).

T	f1 H13	f2	u	v	S		WEIGHT kg		BEARING NO.		ADAPTER SLEEVE		LOCATING RING	
					2 bolts	4 bolts	SN6	SSN6	SELF-ALIGN BALL	SPHERICAL ROLLER	METRIC	INCH	NUMBER	QTY
M8	3	4.2	16	20	M12	M10	2.11	-	1305K 2305K	-	H305 H2305	HE305 HE2305	62x8.5 62x10	2 1
M10	4	5.4	16	20	M12	M10	2.09	-	1306K 2306K	-	H306 H2306	HE306 HE2306	72x9 72x10	2 1
M10	4	5.4	16	20	M12	M10	3.4	4.1	1307K 2307K	-	H307 H2307	HE307 HE2307	80x10 80x10	2 1
M10	4	5.4	15	24	M12	M10	3.6	4.7	1308K 2308K	21308K 2308K	H308 H2308	HE308 HE2308	90x10 90x10	2 1
M12	4	5.4	19	25	M16	M12	5.3	6.8	1309K 2309K	21309K 2309K	H309 H2309	HE309 HE2309	100x10.5 100x10	2 1
M12	4	5.4	18	23	M16	M12	5.5	6.8	1310K 2310K	21310K 2310K	H310 H2310	HE310 HE2310	110x11.5 110x10	2 1
M12	5	6.9	20	28	M16	M12	6.9	9.0	1311K 2311K	21311K 2311K	H311 H2311	HE311 HE2311	120x12 120x10	2 1
M12	5	6.9	20	28	M16	M12	8.8	10.5	1312K 2312K	21312K 2312K	H312 H2312	HE312 HE2312	130x12.5 130x10	2 1
M16	5	6.8	22	30	M20	M12	9.8	12.4	1313K 2313K	21313K 2313K	H313 H2313	HE313 HE2313	140x12.5 140x10	2 1
M16	5	6.8	23	28	M20	M16	13.0	16.4	1315K 2315K	21315K 2315K	H315 H2315	HE315 HE2315	160x14 160x10	2 1
M16	6	8.1	23	30	M20	M16	15.5	19.7	1316K 2316K	21316K 2316K	H316 H2316	HE316 HE2316	170x14.5 170x10	2 1
M20	6	8.1	26	35	M24	M16	16.3	20.7	1317K 2317K	21317K 2317K	H317 H2317	HE317 HE2317	180x14.5 180x10	2 1
M20	6	8.1	27	38	M24	M16	20.0	24	1318K 2318K	- 2318K	H318 H2318	HE318 HE2318	190x15.5 190x10	2 1
M20	6	8.1	28	36	M24	M16	28.0	29.7	1319K 2319K	- 2319K	H319 H2319	HE319 HE2319	200x16 200x10	2 1
M20	7	9.3	27	33	M24	M16	30.5	37.1	1320K 2320K	- 2320K	H320 H2320	HE320 HE2320	215x18 215x10	2 1
M20	8	10.0	28	32	M24	M16	42	49.2	1322K 2322K	- 2322K	H322 H2322	HE322 HE2322	240x20 240x10	2 1
M24	8	10.7	34	42	M30	M20	59	72	-	2324K	H2324	HE2324	280x10	1
M24	8	10.7	34	42	M30	M20	61.5	80.9	-	2326K	H2326	HE2326	280x10	1
M30	9	12.2	34	46	M30	M20	88	105	-	2328K	H2328	HE2328	300x10	1
M30	9	12.2	38	44	M30	M20	89	115	-	2330K	H2330	HE2330	320x10	1
M30	10	13.7	40	52	M36	M24	127	145	-	2332K	H2332	HE2332	340x10	1

## BEARING HOUSING & ACCESSORIES

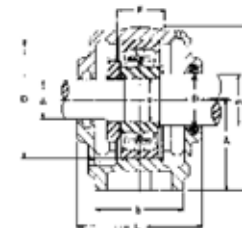
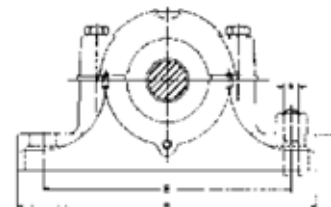
### SN - SSNZ 200 Series



HOUSING NO.	SHAFT DIA			NORMAL DIMENSIONS (mm)														LOCK NUT	LOCK WASHER	ZF SEAL		LOCATING RING	
	d	d1	d2	D	H8	B	b	G	F	H13	A	h13	L	H	E	BOLTS	SELF-ALIGN BALL	SPHERICAL ROLLER		d1	d2	NUMBER	QTY
SNZ 205	25	20	30	52	165	46	22	25	40	67	75	130	M12	1205	2205	-	22205	AN05	AW05	ZF5	ZF7	52x5	2
SNZ 206	30	25	35	62	185	52	22	30	50	77	90	150	M12	1206	2206	-	22206	AN06	AW06	ZF6	ZF8	62x7	2
SNZ 207	35	30	45	72	185	52	22	33	50	82	95	150	M12	1207	2207	-	22207	AN07	AW07	ZF7	ZF10	72x8	2
SNZ 208	40	35	50	80	205	60	25	33	60	85	110	170	M12	1208	2208	-	22208	AN08	AW08	ZF8	ZF11	80x7.5	2
SNZ 209	45	40	55	85	205	60	25	31	60	85	112	170	M12	1209	2209	-	22209	AN09	AW09	ZF9	ZF12	85x6	2
SNZ 210	50	45	60	90	205	60	25	33	60	90	115	170	M12	1210	2210	-	22210	AN10	AW10	ZF10	ZF13	90x6.5	2
SNZ 211	55	50	65	100	255	70	28	33	70	95	130	210	M16	1211	2211	-	22211	AN11	AW11	ZF11	ZF15	100x6	2
SNZ 212	60	55	70	110	255	70	30	38	70	105	135	210	M16	1212	2212	-	22212	AN12	AW12	ZF12	ZF16	110x8	2
SNZ 213	65	60	75	120	275	80	30	43	80	110	150	230	M16	1213	2213	-	22213	AN13	AW13	ZF13	ZF17	120x10	2
SNZ 214	70	60	80	125	275	80	30	44	80	115	155	230	M16	1214	2214	-	22214	AN14	AW14	ZF13	ZF18	125x10	2
SNZ 215	75	65	85	130	280	80	30	41	80	115	155	230	M16	1215	2215	-	22215	AN15	AW15	ZF15	ZF19	130x8	2
SNZ 216	80	70	90	140	315	90	32	43	95	120	175	260	M20	1216	2216	-	22216	AN16	AW16	ZF16	ZF20	140x8.5	2
SNZ 217	85	75	95	150	320	90	32	46	95	125	185	260	M20	1217	2217	-	22217	AN17	AW17	ZF17	ZF21	150x9	2
SNZ 218	90	80	100	160	345	100	35	62.4	100	145	195	290	M20	1218	2218	-	22218	AN18	AW18	ZF18	ZF22	160x16.2	2
SNZ 219	95	85	110	170	345	100	35	53	112	140	210	290	M20	1219	2219	-	22219	AN19	AW19	ZF19	ZF24	160x11.2	2
SNZ 220	100	90	115	180	380	110	40	70.3	112	160	218	320	M24	1220	2220	-	22220	AN20	AW20	ZF20	ZF26	170x10	2
SNZ 222	110	100	125	200	410	120	45	80	125	175	240	350	M24	1222	2222	-	22222	AN22	AW22	ZF22	ZF28	180x12.1	2
SNZ 224	120	110	135	215	410	120	45	86	140	185	270	350	M24	1224	2224	-	22224	AN24	AW24	ZF24	ZF30	200x13.5	2
SNZ 226	130	115	145	230	445	130	50	90	150	190	290	380	M24	1226	2226	-	22226	AN26	AW26	ZF26	ZF33	200x10	2
SNZ 228	140	125	155	250	500	150	50	98	150	205	305	420	M30	1228	2228	-	22228	AN28	AW28	ZF28	ZF35	215x14	2
SNZ 230	150	135	165	270	530	160	60	106	160	220	325	450	M30	1230	2230	-	22230	AN30	AW30	ZF30	ZF37	230x13	2
SNZ 232	160	140	175	290	550	160	60	114	170	235	345	470	M30	1232	2232	-	22232	AN32	AW32	ZF32	ZF39	250x15	2

## BEARING HOUSING & ACCESSORIES

### SN - SSNZ 300 Series



HOUSING NO.	SHAFT DIA			NORMAL DIMENSIONS (mm)														LOCK NUT	LOCK WASHER	ZF SEAL		LOCATING RING	
	d	d1	d2	D	H8	B	b	G	F	H13	A	h13	L	H	E	BOLTS	SELF-ALIGN BALL	SPHERICAL ROLLER		d1	d2	NUMBER	QTY
SNZ 305	25	20	30	60	185	52	22	34	50	80	90	150	M12	1305	2305	-	-	AN05	AW05	ZF5	ZF7	62x8.5	2
SNZ 306	30	25	35	72	185	52	22	37	50	82	95	150	M12	1306	2306	-	-	AN06	AW06	ZF6	ZF8	62x9	2
SNZ 307	35	30	45	80	205	60	25	41	60	90	110	170	M12	1307	2307	-	-	AN07	AW07	ZF7	ZF10	72x10	2
SNZ 308	40	35	50	90	205	60	25	43	60	95	115	170	M12	1308	2308	21308	22308	AN08	AW08	ZF8	ZF11	80x10	2
SNZ 309	45	40	55	100	255	70	28	46	70	105	130	210	M16	1309	2309	21309	22309	AN09	AW09	ZF9	ZF12	90x10.5	2
SNZ 310	50	45	60	110	255	70	30	50	70	115	135	210	M16	1310	2310	21310	22310	AN10	AW10	ZF10	ZF13	100x10	2
SNZ 311	55	50	65	120	275	80	30	53	80	120	150	230	M16	1311	2311	21311	22311	AN11	AW11	ZF11	ZF15	110x11.5	2
SNZ 312	60	55	70	130	280	80	30	56	80	125	155	230	M16	1312	2312	21312	22312	AN12	AW12	ZF12	ZF16	120x12	2
SNZ 313	65	60	75	140	315	90	32	58	95	130	175	260	M20	1313	2313	21313	22313	AN13	AW13	ZF13	ZF17	130x12.5	2
SNZ 314	70	60	80	150	320	90	32	61	95	130	185	262	M20	1314	2314	21314	22314	AN13	AW13	ZF13	ZF18	140x12.5	2
SNZ 315	75	65	85	160	345	100	35	65	100	140	195	290	M20	1315	2315	21315	22315	AN15	AW15	ZF15	ZF19	150x13	2
SNZ 316	80	70	90	170	345	100	35	68	112	145	212	290	M20	1316	2316	21316	22316	AN16	AW16	ZF16	ZF20	150x10	2
SNZ 317	85	75	95	180	380	110	40	70	112	155	218	320	M24	1317	2317	21317	22317	AN17	AW17	ZF17	ZF21	170x14.5	2
SNZ 318	90	80	100	190	400	110	33	74	112	160	230	320	M24	1318	2318	21318	22318	AN18	AW18	ZF18	ZF22	170x10	2
SNZ 319	95	85	110	200	420	120	36	77	125	170	245	350	M24	1319	2319	21319	22319	AN19	AW19	ZF19	ZF24	180x14.5	2
SNZ 320	100	90	115	215	420	120	38	83	140	175	280	350	M24	1320	2320	21320	22320	AN20	AW20	ZF20	ZF26	190x15.5	2
SNZ 322	110	100	125	240	460	130	40	90	150	190	300	390	M24	1322	2322	21322	22322	AN22	AW22	ZF22	ZF28	200x16	2
SNZ 324	120	110	135	260	540	160	50	96	160	205	325	450	M30	1324	2324	21324	22324	AN24	AW24	ZF24	ZF30	215x18	2
SNZ 326	130	115	150	280	560	160	50	103	170	215	350	470	M30	1326	2326	21326	22326	AN26	AW26	ZF26	ZF34	240x20	2
SNZ 328	140	125	160	300	630	170	55	112	180	235	375	520	M30	1328	2328	21328	22328	AN28	AW28	ZF28	ZF36	240x10	1
SNZ 330	150	135	170	320	680	180	55	118	190	245	395	560	M30	1330	2330	21330	22330	AN30	AW30	ZF30	ZF38	280x10	1
SNZ 332	160	140	180	340	710	190	60	124	200	255	415	580	M36	1332	2332	21332	22332	AN32	AW32	ZF32	ZF40	300x10	1