

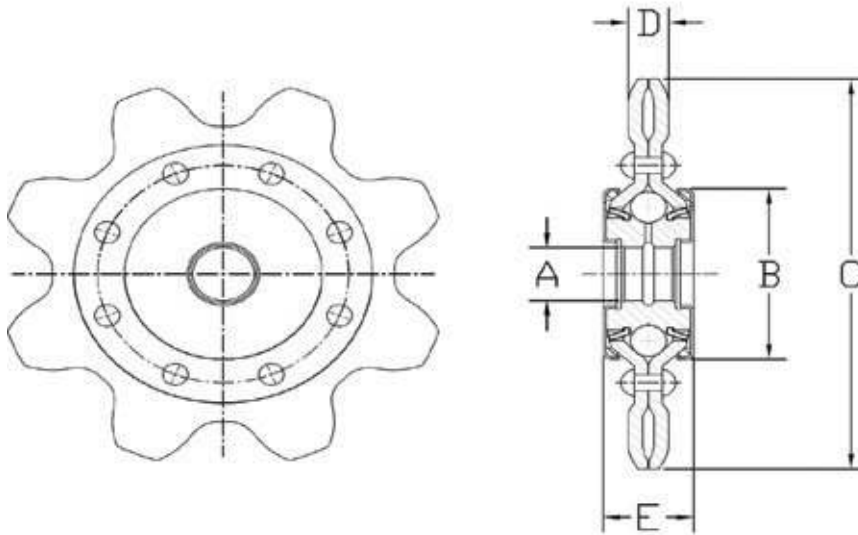
Sprocket Idlers

These sprocket idlers are designed for extended pitch chain. These BPT idlers are manufactured with heavier gauge steel for greater life and load carrying capacity. They are installed with standard 1/2 or 5/8 bolts, and include accurately contoured hardened teeth to resist wear and damage to the chain. BPT idlers are compact and easy to install and built for a long maintenance-free service life. Typical applications include gathering chains on corn heads and other harvesting equipment.

ADVANTAGES

- Case hardened teeth prolong chain and idler life. Accurately contoured teeth from heavy gauge steel
- Over-size, factory packed lubricant chamber assures maximum life and operating efficiency without troublesome relubrication
- Bearing races are hardened to resist wear, outers and inners are accurately formed for smooth running
- BPT's self-contouring, free running, self-wiping seal provides positive contact under all conditions of misalignment
- Full ball complement for high durability

Heavy Duty Double Pitch Chain Idlers



PART NO.	UNIT	CHAIN NO	PITCH	ROLLER DIA	TEETH	A	B	C	D	E	WEIGHT (LBS / kg)
AG2427	Inch	2060	1-1/2	15/32	8	.643/.649	7/8	4-7/32	7/16	.927	1.13
	mm		38.1	11.906		16.332/16.484	22.225	107.156	11.112	23.545	.512
AG2427-AM	Inch	2060	1-1/2	15/32	8	.516/.522	2-5/64	4-7/32	7/16	31/32	1.50
	mm		38.1	11.906		13.106/13.258	52.784	107.156	11.112	24.606	.680
AG2427-AF	Inch	2060	1-1/2	15/32	8	.643/.649	2-5/64	4-7/32	7/16	31/32	1.46
	mm		38.1	11.906		16.332/16.484	52.784	107.156	11.112	24.606	.662
AG2427-1AF	Inch	2060	1-1/2	15/32	8	.643/.649	2-5/64	4-7/32	7/16	31/32	1.46
	mm		38.1	11.906		16.332/16.484	52.784	107.156	11.112	24.606	.662
AG2438-1AF	Inch	Special	1-1/4	.460	11	.643/.649	2-5/64	4-17/32	9/16	1-1/32	1.50
	mm		31.75	11.684		16.332/16.484	52.784	115.093	14.287	26.193	.680
AG2565-2AF	Inch	555	1.630	21/32	8	.643/.649	2-5/64	4-3/4	7/16	1-3/16	1.69
	mm		41.402	16.668		16.332/16.484	52.784	120.65	11.112	30.162	.776
AG2565-3AF	Inch	555	1.630	21/32	8	.643/.649	2-5/64	4-3/4	7/16	31/32	1.50
	mm		41.402	16.668		16.332/16.484	52.784	120.65	11.112	24.606	.680
AG2566-2AF	Inch	550	1.630	21/32	8	.643/.649	2-5/64	4-3/4	11/16	1-3/16	1.69
	mm		41.402	16.668		16.332/16.484	52.784	120.65	11.112	30.162	.776
AG2566-4AF	Inch	550	1.630	21/32	8	.630/.636	2-5/64	4-3/4	11/16	1-1/32	1.50
	mm		41.402	16.668		16.002/16.154	52.784	120.65	11.112	24.606	.680