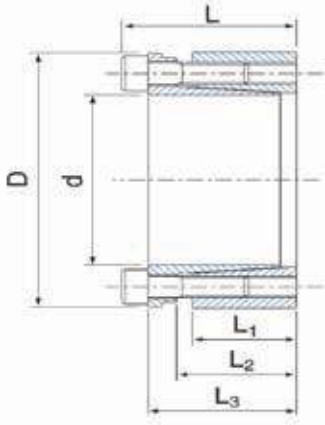


# Self Locking Units (Type-04) (Self Centering)



Dimensions							Transmissible Torque KN	Transmissible Axial Force Nm	Pressure		Clamping Screws DIN912-12.9		
d	D	D1	L1	L2	L3	L			Shaft Surface Pressure N/mm <sup>2</sup>	Hub Surface Pressure N/mm <sup>2</sup>	No.	Size	Screws Tightening Torque Nm
19	47	26	31	39	39	45	332	32	193	78	4	M6x25	17
20	47	26	31	39	39	45	349	32	183	78	4	M6x25	17
22	47	26	31	39	39	45	383	32	166	78	4	M6x25	17
24	50	26	31	39	39	45	629	48	229	110	6	M6x25	17
25	50	26	31	39	39	45	654	48	220	110	6	M6x25	17
28	55	26	31	39	39	45	733	48	196	100	6	M6x25	17
30	55	26	31	39	39	45	785	48	183	100	6	M6x25	17
32	60	26	31	39	39	45	1116	65	229	122	8	M6x25	17
35	60	26	31	39	39	45	1220	65	209	122	8	M6x25	17
38	65	26	31	39	39	45	1325	65	193	113	8	M6x25	17
40	65	26	31	39	39	45	1395	65	183	113	6	M6x25	17
42	75	30	36	47	47	47	1982	87	204	115	6	M8x30	41
45	75	30	36	47	47	47	2123	87	191	115	6	M8x30	41
48	80	30	36	47	47	47	2265	87	179	107	6	M8x30	41
50	80	30	36	47	47	47	2359	87	172	107	6	M8x30	41
55	85	30	36	47	47	47	3458	116	208	135	8	M8x30	41
60	90	30	36	47	47	47	3772	116	191	127	8	M8x30	41
65	95	30	36	47	47	47	4087	116	176	120	8	M8x30	41
70	110	40	36	47	57	67	7136	189	199	127	8	M10x35	83
75	115	40	46	57	62	72	7645	189	186	121	8	M10x35	83
80	120	40	46	62	62	72	8155	189	174	116	8	M10x35	83
85	125	40	46	62	62	72	10831	236	205	139	10	M10x35	83
90	130	40	46	62	62	72	11469	236	193	134	10	M10x35	83
95	135	40	46	62	62	72	12106	236	183	129	10	M10x35	83
100	145	46	52	77	77	89	14837	275	176	121	8	M12x45	145